

iView Configuring the HMI App & IDCS Services Tutorial

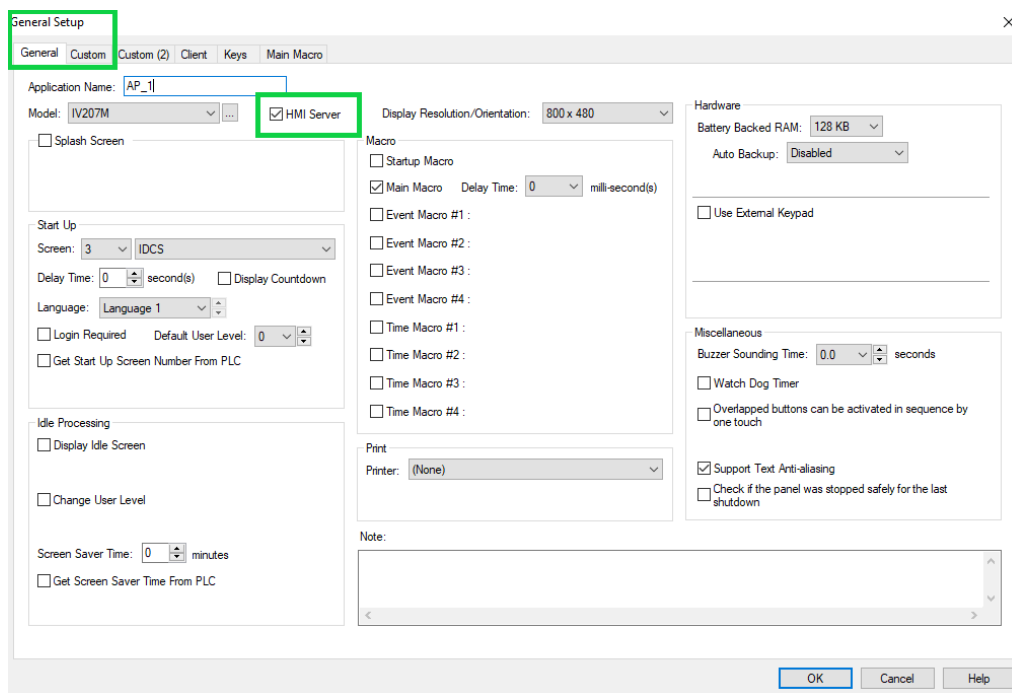


Introduction:

This tutorial provides information about and procedures for installing and configuring the HMI APP and IDCS services.

Step 1: Setting up the HMI Panel as a Server

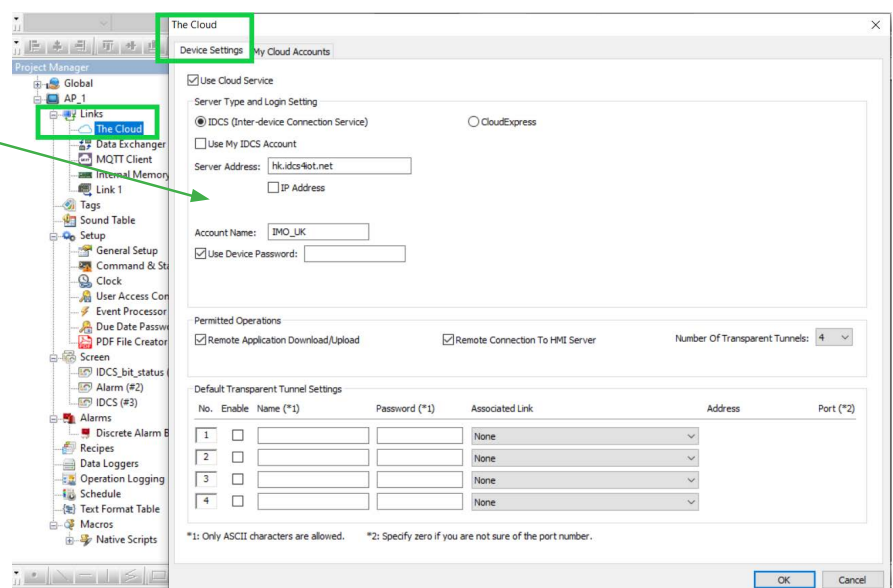
Once you have installed the iView Developer v.4 Software, you will need to create a new project, and under the General Setup, ensure HMI Server option is checked as below:



Step 2: Enabling the IDCS Server

Once you have received the welcome email with device login details you need to insert them in the fields as shown below:

Account Name: IMO_UK
Device Name: Automation
Device Password: EP5CGHGZFXA
Device Type:
Required User Level: 1

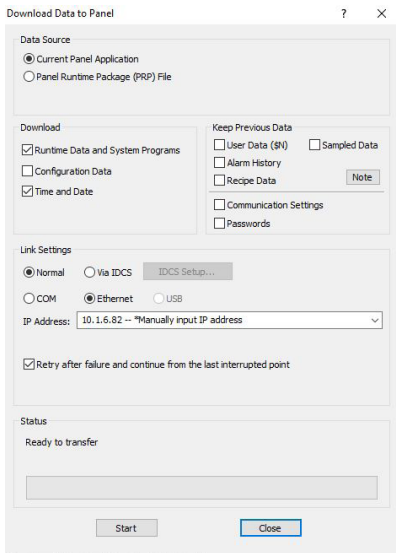


iView Configuring the HMI App & IDCS Services Tutorial



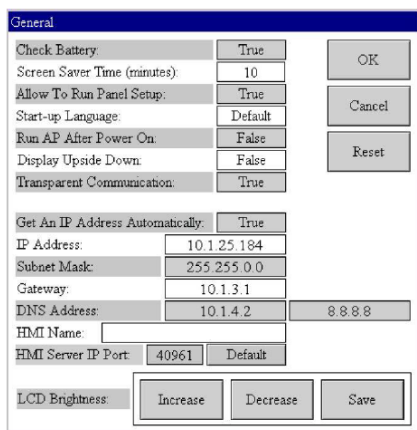
Step 3: Download settings to the Panel

Once you have configured the IDCS, download the configuration settings to the panel using either Ethernet, USB or COM.



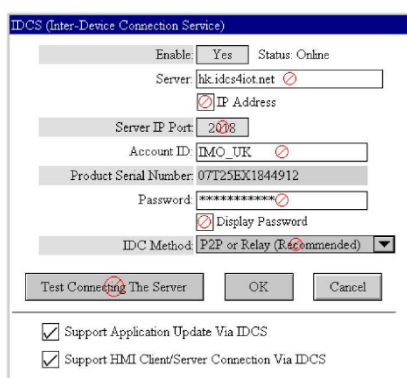
Step 4: Connecting the HMI Panel to the IDCS Server

To connect the HMI panel to the IDCS Server the default port in the panel set up should be set to “40961”. Please ensure that “Get An IP Address Automatically” is set to “TRUE”. Then ensure that the “HMI Server” option on the panel set up is checked.



Step 5: Ensuring HMI is Online

Check availability of the panel connection link in the HMI panel set up. Then place the device in “Run Mode”.



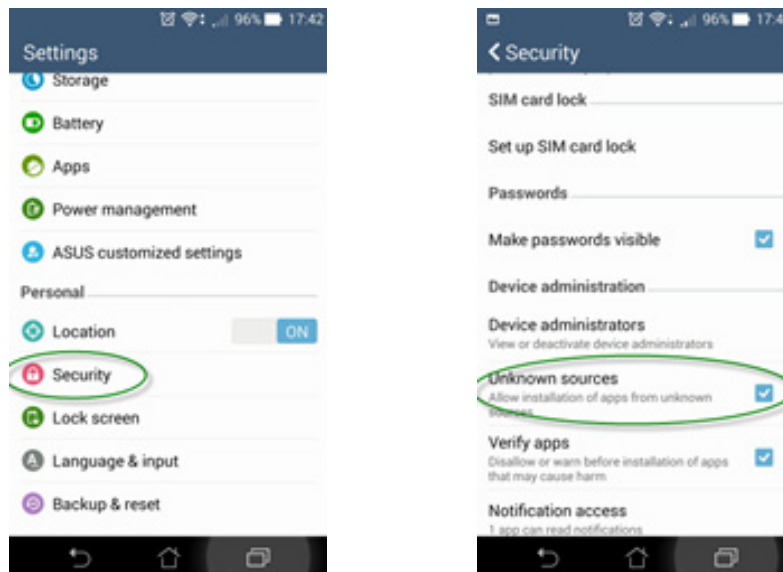
iView Configuring the HMI App & IDCS Services Tutorial

Step 6: Installing the HMI application & enabling unknown sources

From an Android device go to <https://downloads.imopc.com/hmiinhand.apk> and download the App.

Before the installing the App, head to your device main settings menu, then look for an entry titled either “Security” or “Lock screen and security.”

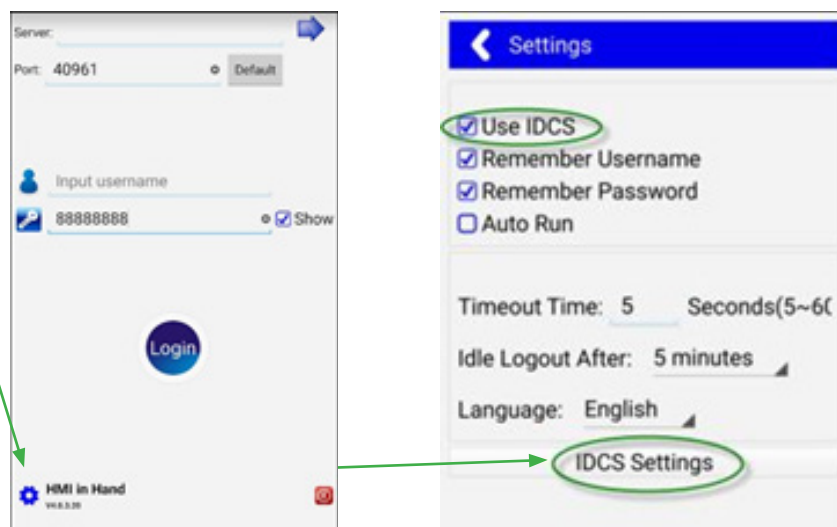
From the security menu, simply tick the box or toggle the switch next to the “Unknown sources” entry, then press “OK” as per picture below.



You can now install the App on your Android device.

Step 7: Configuring IDCS settings

Click on the Settings icon, then choose “IDCS” options, such as the pictures below, next, At the bottom of the page click on IDCS settings to configure the login details. NOTE: It is recommended to set the Timeout Time to 60 seconds.



iView Configuring the HMI App & IDCS Services Tutorial

Step 8: Login

At the login page, enter your account details and then press the white back arrow at the top of the screen to return to the main settings page, and then press it again to return to the main page.

← IDCS (Inter-Device Connection Service)

Server: hk.idcs4iot.net

Server Port: 2018

Account ID:

User name:

Password: Show

Server:

Port: 40961 Default

Input username

Input password Show

Login

HMI in Hand
V4.0.3.00

Welcome to IDCS Automation

Here is your credential to login IDCS:

Account: IMO_UK

Username: Automation

Password: YQ8A7N

NOTE: Your login details for the HMI in hand app, and the device will be automatically generated and sent to you via email. This should be entered in the fields on the login screen as above.

Step 9: Selecting the HMI Panel

Once back at the main page, press on the blue arrow at the top right hand corner to take you to the panel selection screen as below. Once you have selected your available panel, the app will revert to the login page where the selected Panel is now displayed in the server field.

← Servers

kalaya_07 IDCS

cmyers_07

iosei_07

sdavey_07

ihannah_07

crenault_07

ipoirson_07

mseve_07

fsavet_07

Refresh

Server: kalaya_07

Port: 40961 Default

Input username

Input password Show

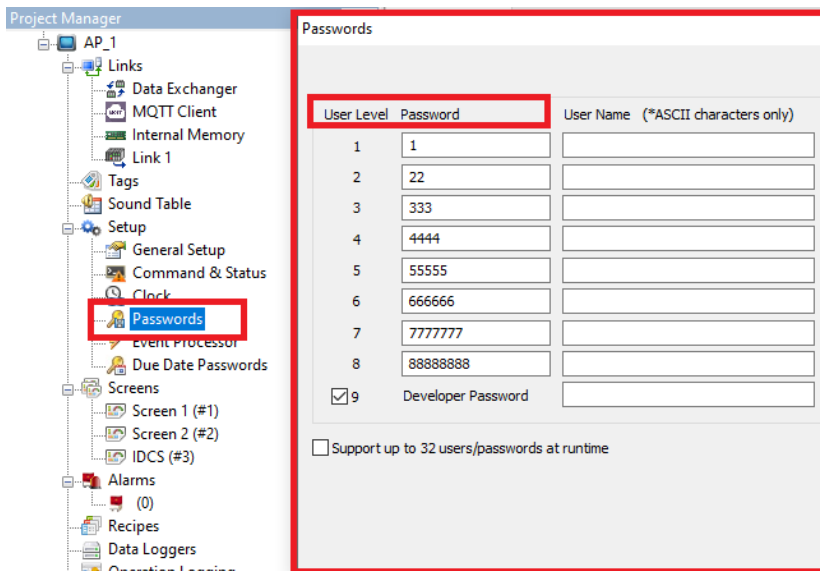
Login

HMI in Hand
V4.0.3.00

iView Configuring the HMI App & IDCS Services Tutorial

Step 9a: Defining your password in the iView Developer Software

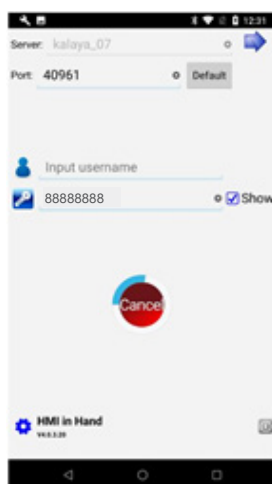
In order to log in to your panel remotely, you will need to use the relevant password defined in the iView Developer Software. It is possible to define 8 levels of access depending upon restriction of services and what the specific user account requires or can have access to. See below for passwords in the Developer software.



NOTE: You will need this password to log in to the panel from the HMI-in-hand App, once you have selected the available HMI Panel.

Step 10: Logging on the HMI Panel

Once you have entered your login details click on the "login". The APP will start uploading the program from the available panel as shown below:



www.imopc.com

